

# BREAST AUGMENTATION

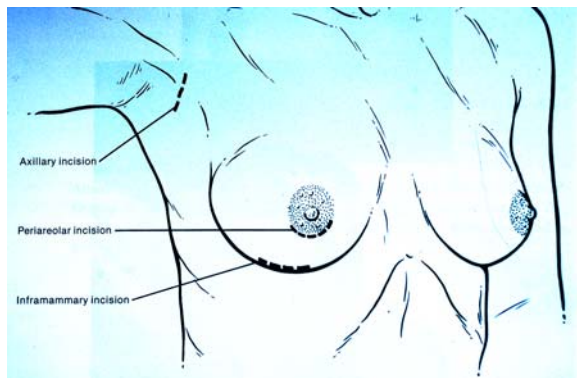


This procedure is more commonly called augmentation mammoplasty . It is done by implanting two breast implants in the most ideal position and is usually performed when the breast of the patient is not big enough in comparison to her body morphology.

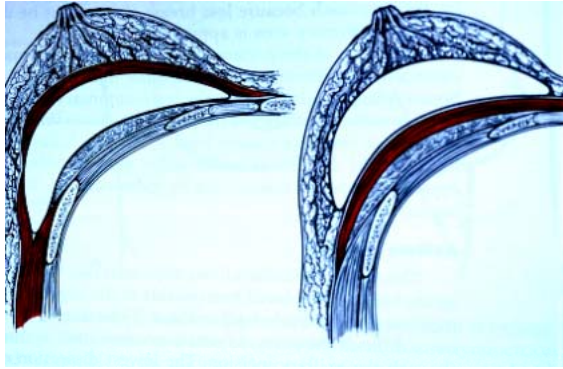
All the implants are actually made of a silicon envelope and a filling substance . this substance can be either saline or silicon gel .

This type of procedure usually requires a general anesthesia , with a one day and/or one night hospital stay .

There are several possible cutaneous approaches : infra mammary , axillar , and areolar . Each one has advantages and inconvenients and must be discussed with the surgeon . They will be choosed considering different parameters such as the quality of the skin , the type of breast , the muscular activity , the degree of ptosis , the size of the areola....



The breast implant can be put in two different positions : pre or retro muscular , i. e. immediately beneath the mammary gland or more deeply beneath the pectoralis major muscle . In each case this is completely independent of the cutaneous incision .



*retro and pre muscular implantation*

The shape of the implant can also be different according to the surgeon or the patient desire . It can be round , more or less flat , or with a more anatomical shape . The real result of the surgical procedure can only be seen after three months when the new breast has become completely soft and souple .

**Cases before and after :**

